

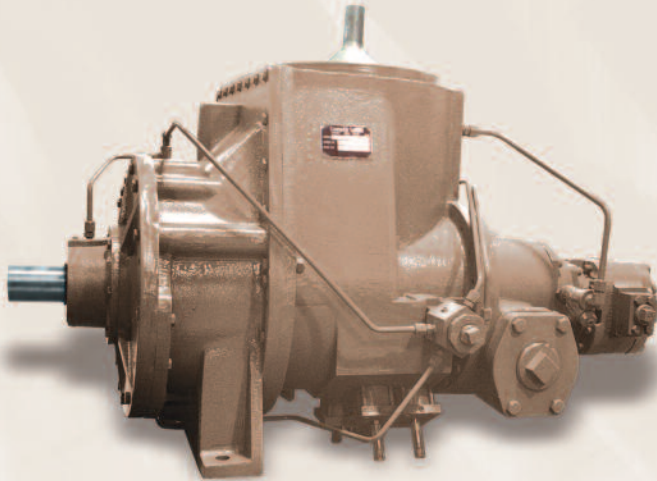


LeROI® Gas Compressors

by Rotary Compression Technologies, Inc.

HG24 Series

Model HG24XXX Gear Drive



*HG24XXXVIEP
Compressor with Standard Shaft, Versatrol and Oil Pump*

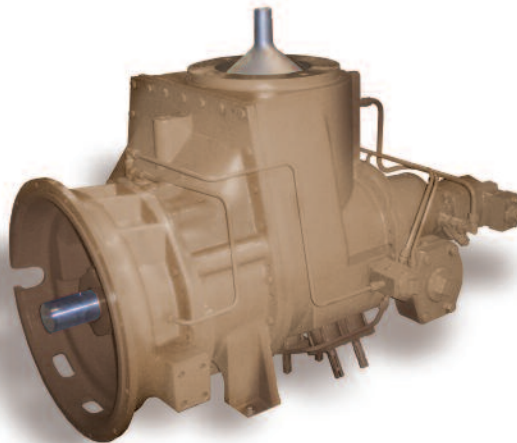
PERFORMANCE

- Brake HP 350 Max.
- Flow Range (MSCFD) 5,000 Max.
- Inlet Pressure 20" Hg Vac. Min.*
50 PSIG Max.
- Discharge Pressure 20*-300 PSIG (MAWP)
- Speed Range 500 RPM Min.
3,600 RPM Max.

** Consult Factory for use with lower vacuum inlet or discharge pressures.*

*HG24XXXVFEP
Compressor with SAE #1
Bell Housing,
Versatrol and
Oil Pump*

*(SAE #1 to #0
adapter is available)*



BENEFITS

Rotary Screw Compressors are very cost-effective for handling high volumes of gas in field gathering, vapor recovery, and other applications. The HG24 Series is suitable for applications to 350 BHP and 300 PSIG discharge pressure.

Low maintenance and high reliability are inherent with rotary screws because they have few moving parts. There are no valves, rings or packing to wear out or cause loss of efficiency.

Smooth operation results from no unbalanced forces and no pressure pulsation. No foundation is required. There are no piping vibrations from pressure pulsation.

Direct coupled natural gas engine or electric motor drives are equally acceptable with the HG24XXX rotary screw.

LeROI Rotary Screw Gas Compressors are available in 12 models covering a flow range of 20 to 15,000 MSCFD and horsepower from 10 to 800.

FEATURES

Single-Stage operation from 15 PSIG to 300 PSIG maximum is possible with the HG24 Series oil-flooded compressors. Compressor packages are therefore simple, reliable and inexpensive.

The gas differential pressure provides oil circulation for proper lubrication at differential pressures over 60 PSI. Optional oil pumps are available for applications with less than 60 PSI differential pressure.

Adjustable Vi allows discharge porting to be selected in the field to match the internal compression to the application requirement for maximum compression efficiency.



Variable Vi

All iron or steel construction with no copper or copper alloys makes these compressors compatible with natural gas, sweet or sour.



LeROI® Gas Compressors

by Rotary Compression Technologies, Inc.

HG24 Series

Models HG24XXX Gear Drive

Options and Specifications

TECHNICAL SPECIFICATIONS

- Model HG24
- Rotor Dia. 245 mm (9.64 inches)
- Rotor L/D 1.65
- Rotor Description:
Twin Screw SRM Profile with Sealing Strips,
4 Lobe Male, 6 Lobe Female
- Shaft Seal(s) – Mechanical*
- Drive System:
Internal Helical Speed Increasing Gears
(AGMA 11)
Gear Ratios of .717 - 2.617 are available
Rotation - Facing Shaft - CW
Drive Shaft 2-1/2" Dia. with 5/8" Square Key
- Materials:
Rotors – Ductile Iron 65-45-12
Castings – Ductile Iron 65-45-12/Cast Iron G3000
Bearings – Roller bearings on the inlet end
and tapered roller bearings on the discharge
end – alloy steel races, rolling elements and
cages.
- Weight:
2,250 Pounds

* LeROI's mechanical seals prevent air from entering the gas stream when operated with any attainable vacuum inlet gas pressure.

OPTIONS

- Versatrol Internal Bypass Valves:
Versatrol internal bypass valves are available for efficient capacity control from 100-50% of design flow. Control can be manual with four steps or stepless with a microprocessor. Control system is not included.
- Internal Volume Ratio:
The HG24 has LeROI's standard externally adjustable Vi feature, allowing internal compression optimization while the compressor is operating. Fixed Vi of H = 4.4, M = 3.0 and L = 1.9 are also available.
- Oil Pump:
Integral oil pumps are available for low-pressure differential applications.
- SAE # 1 Flywheel Housing
- SAE # 0 Flywheel Housing Adapter
- Modules with gas/oil reservoir assembly, thermal valve, oil filter assembly, minimum pressure valve and sight glass are all mounted on a steel sub-base with connected components.

APPLICATIONS

- Gas Gathering
- Well Head Gas Compression
- Fuel Gas Boosting
- Vapor Recovery
- Inert Gas Boosting
- Landfill Gas

Visit www.leroigas.com for additional information.



LeROI® Gas Compressors
by Rotary Compression Technologies, Inc.

211 East Russell Road
Sidney, Ohio 45365

Telephone: 937.498.2555
Fax: 937.492.3424

www.leroigas.com
Email sales@leroigas.com



LeROI is an ISO 9001:2008
registered company

LeROI Gas Compressors policy is one of continuous improvement and we therefore reserve the right to alter specifications and prices without prior notice. All products are sold subject to the Company's conditions of sale.

Brochure re-order ref: #RCTHG24 02/2010